



CHASE APARTMENTS
LONDON



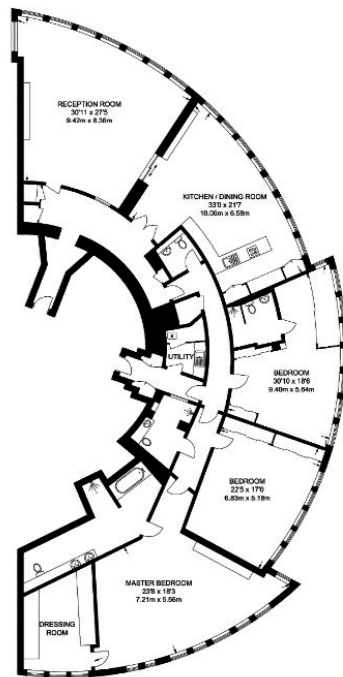
The Tower, St. George Wharf, Vauxhall SW8 2BW

£5,000

- 24/7 concierge
- swimming pool over looking River
- smart home system
- 3300 sq feet apartment
- business lounge and cinema
- gym / spa
- valet parking
- meeting room / dining room
- gated development
- under floor heating and air cooling

Grosvenor Waterside, 32 Gatliff Road, Belgravia, London, SW1W 8QN
02077225022

<http://www.chaseapartments.com/>



APPROXIMATE GROSS INTERNAL AREA
3370 SQ FT / 313.1 SQ M

Viewings

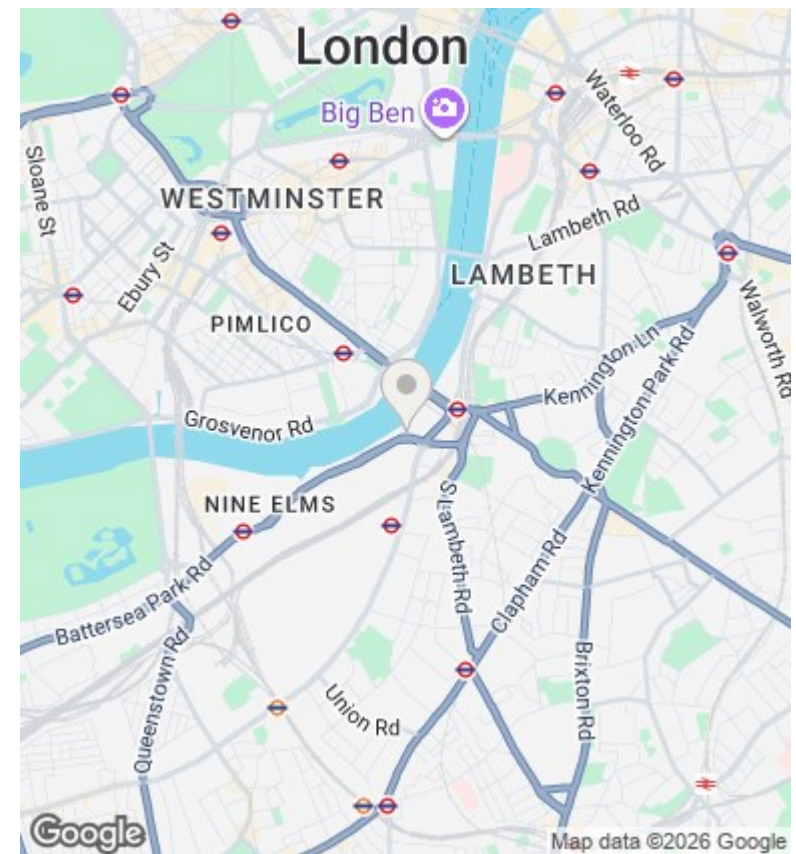
Viewings by arrangement only.
Call 02077225022 to make an appointment.

Council Tax Band

H

EPC Rating:

B



Energy Efficiency Rating		
	Current	Potential
Very energy efficient - lower running costs		
(92-plus) A		
(81-91) B	83	84
(69-80) C		
(55-68) D		
(39-54) E		
(21-38) F		
(1-20) G		
Not energy efficient - higher running costs		
England & Wales		EU Directive 2002/91/EC